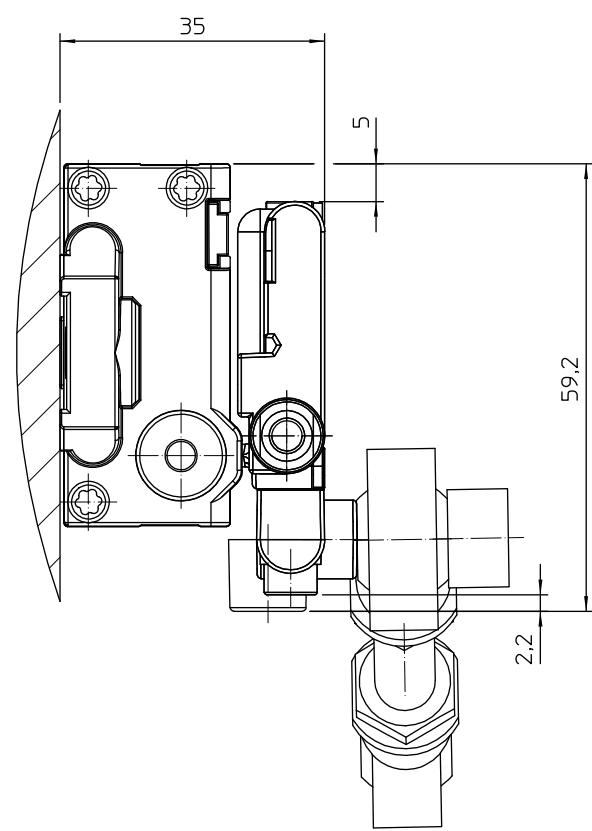
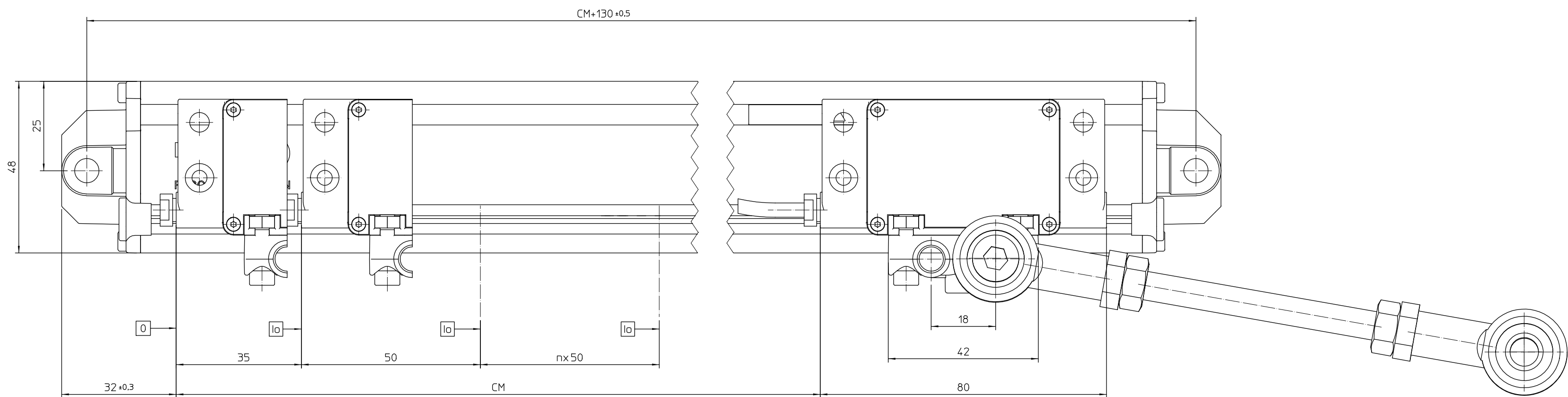


Technical drawing of the CM-144 antenna. The drawing includes a side view on the left and a front view on the right. The side view shows a base with a height of 24 and a mounting bracket with a height of 10. The front view shows the antenna's profile with a total length of CM-144. A vertical dimension of 45.16 is indicated from the base to the center of the antenna. A horizontal dimension of 9.6 is shown for the antenna's width. A detail box on the right specifies surface finish requirements: 0.5G for the top surface and 0.1 for the side surface.



CM = Curso medición
CM = Measuring length
G = Guía máquina
G = Machine guideway
0 = Comienzo curso medición CM
0 = Code start value
lo = Marca de referencia
lo = Reference marks

						Escala:	1:1
							mm
							Tolerancing ISO 8015
							ISO 2768 - m H
							< 6 mm±0.2 mm
Nº	Modificado		Propu.	Vº Bº	Fecha		
Nº	Designación	PB-1020	Cant.	Material	Acabado		
	Plano Nº	El 05-10-16		Fagor Automation S. Coop.			
	Sustituye a:	Dibujado Sormen		20500 Mandragón			
		Comprobado					
4	1	3	2	1	1		